

# SMART PARK



## Industrial Estate



Located in the north  
of Map Ta Phut  
Industrial Estate on Route 3  
(Sukhumvit Road)  
Rayong, Thailand



**7** kms.  
from Map Ta Phut  
Industrial Port

**29** kms.  
from Sattahip  
Port

**53** kms.  
from Laem Chabang  
Port



**17** kms.  
from U-Tapao  
International Airport

**150** kms.  
from Suvarnabhumi  
International Airport



**165** kms.  
from Bangkok

Total area  
**547.10**  
acre

# SMART PARK

## Industrial Estate



### SMART Utilities & Facilities

▶▶ EEC Special Economic Promotional Zone



## ▶▶ Targeted Industry

Aviation & Logistics Industry  
**118.49** acre

Medical Industry  
**71.50** acre

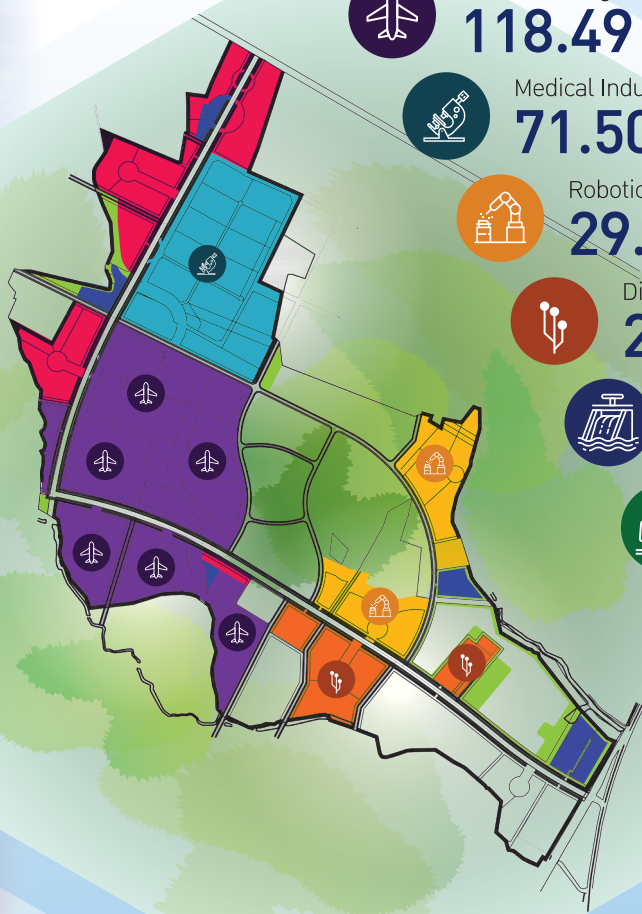
Robotics Industry  
**29.32** acre

Digital Industry  
**26.43** acre

Utility Area  
**147.61** acre

Green Belt and Buffer Zone  
**94.22** acre

Commercial Area  
**59.52** acre



## ▶▶ Connected to all types of transports



Double track railways



Motorways



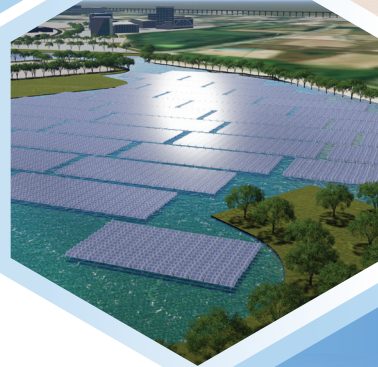
High-speed rail



U-Tapao International Airport



Map Ta Phut Industrial Port



### • Infrastructure & Utilities

- International standard infrastructure and utilities include roads, electricity, water supply and central waste-water treatment system.
- With the DISTRIC COOLING concept

### • Communication System

- Fiber optic cables, and communication systems.
- Data Farm and other facilities



### • Business & Lifestyle

- Community Mall for those Interested
- Agro – market



## Targeted Industries

SMART PARK 's target industries are the latest technologies and innovations industries which include:

- Medical Hub
- Research and Development
- Aviation & Logistics Industry
- Intelligent Device, Robotic and Mechanical
- Digital Technology with Artificial Intelligence



# SMART PARK

Industrial Estate

Ready to Launch its Service

in **2024**

See you in 2024

# I-EA-T +EEC

One Smart Platform  
for your Brilliant  
Investment



Industrial Estate Authority of Thailand (I-EA-T)

618 Nikhom Makkasan Road, Makkasan, Ratchathewi, BANGKOK 10400 Thailand  
Tel: (+66)-2253-0561 Fax: (+66)-2253-4086 Email: investment.1@ieat.mail.go.th



For more information  
Industrial Estate Authority  
of Thailand

Marketing Division  
Tel. 02-253-0561 Ext. 1114

Operation 3 Department  
Tel. 02-253-0561 Ext. 1421, 6405